

SMC

STRAPPING MACHINE
With welding or punching unit



SUND BIRSTA

Technical Specifications

Strapping Machine

Dimensions, (L*H*W)	3010 x 1150 x 750 mm
Weight	approx. 1300 kg
Noise level	<85 dB(A)
Bundle dimensions	ø 700 / 950 - 1400 mm
Bundle dimensions height	700 - 900 mm
Hydraulic working pressure	100 bar

Electrical Equipment

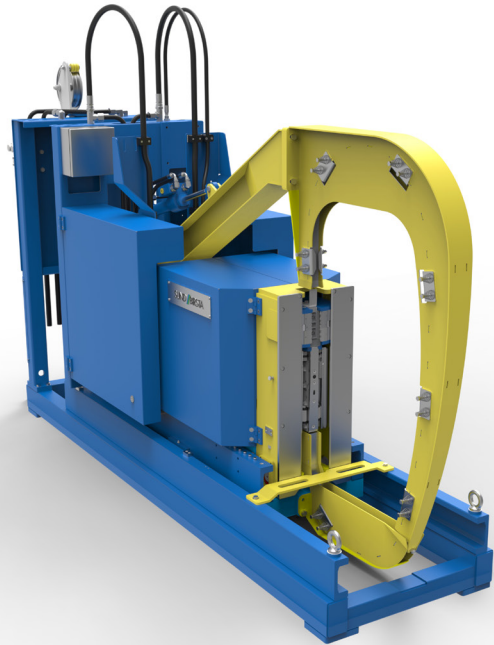
Control system	PLC
Internal voltage	24V DC
Standard voltage	400V, 3-phase

Strap Arrangement

Strap magazine, coil weight	500 or 1000 kg
Accumulator incl. counter weight pulley system	

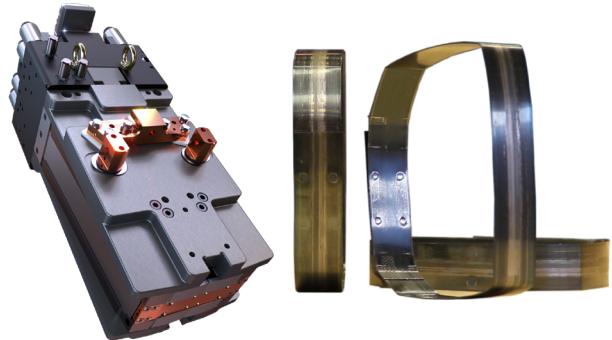
Options

Hydraulic power unit



Strap head with welding unit, SBHRW

- Direct current spotwelder
- Compact design for rebuilding projects
- Integrated hydraulic channel construction (less hoses needed)
- Dust protection with compressed air
- Electrode cap replacement within 10 minutes
- High personal mechanical safety
- Welding in closed space for spark protection
- Integrated water cooling circuit



Strap head with punching unit, SBHX5

- Patented tight sealing design
- Design that ensures high availability
- Service-friendly design with easy accessibility
- Integrated hydraulic channel construction (less hoses needed)
- Optional dust protection with compressed air
- Optional lubrication of the unit with mist lubrication
- Wear part replacement in less than 15 minutes
- High personal mechanical safety

